

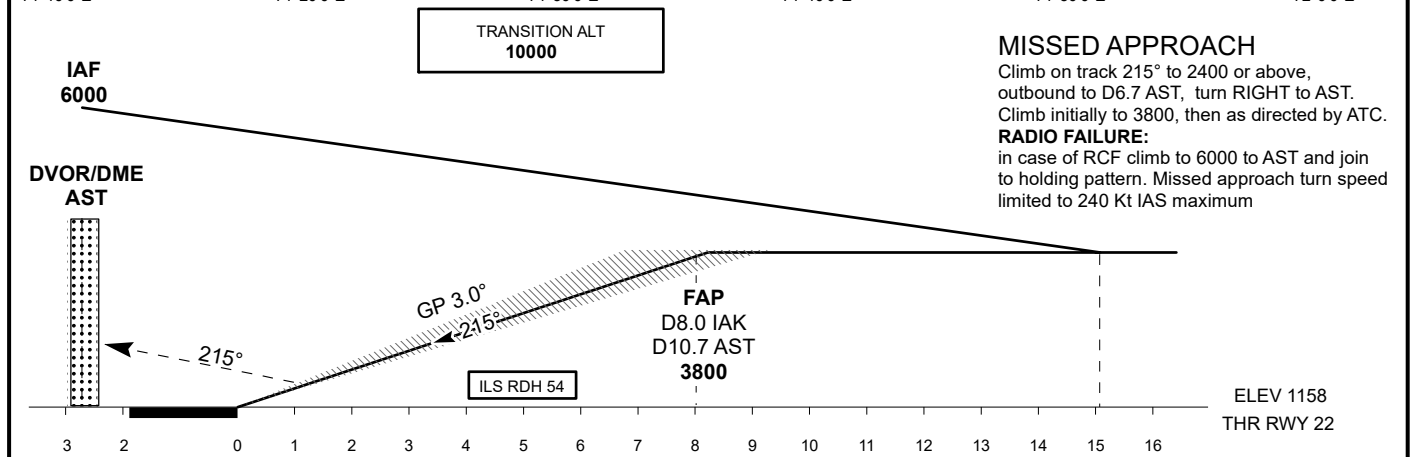
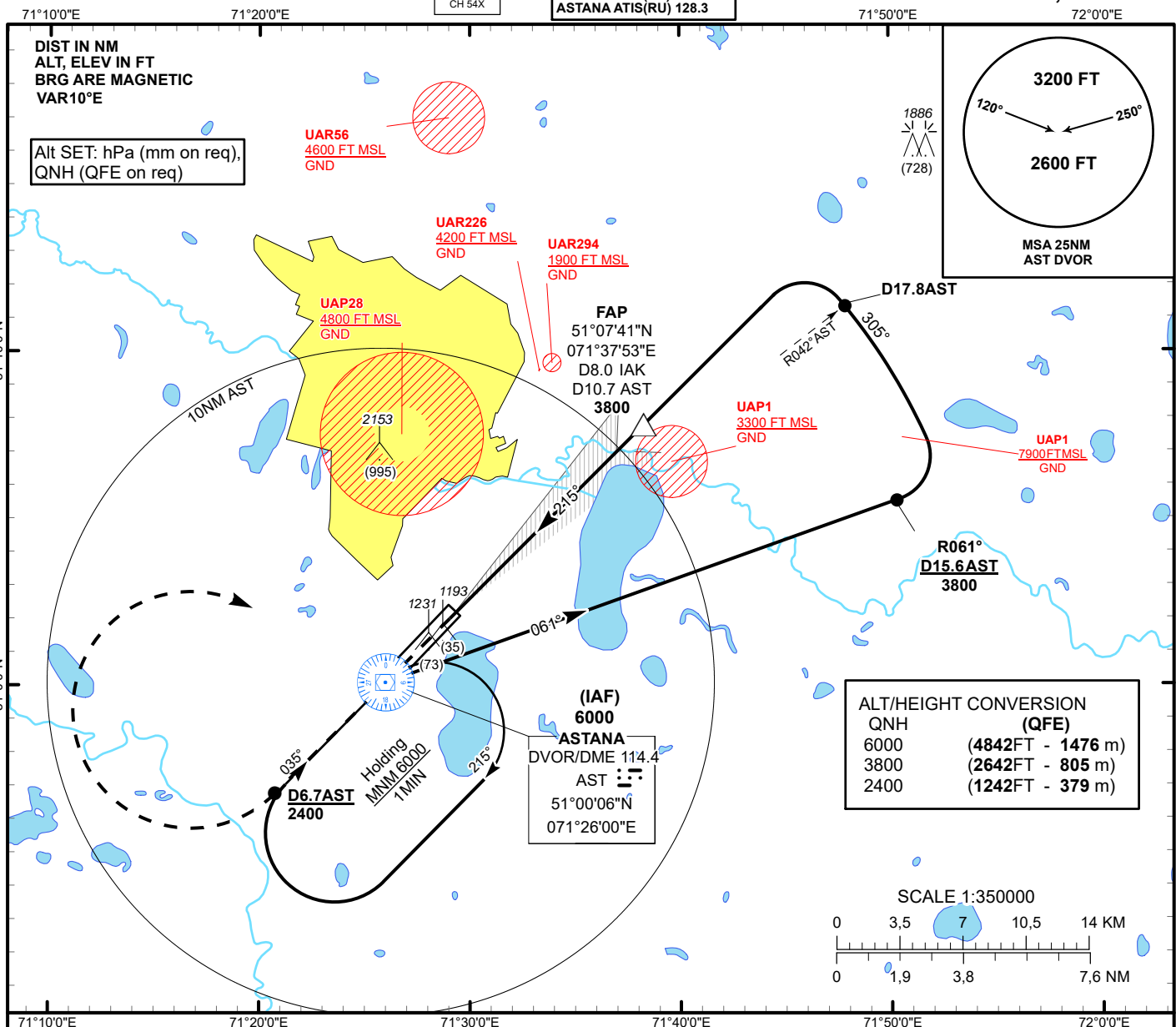
INSTRUMENT
APPROACH
CHART - ICAO

AERODROME ELEV **1166FT**
HEIGHTS RELATED TO
THR RWY 22 - ELEV **1158FT**

ILS
LLZ 111.7
IAK
GP 333.5
CH 54X

ASTANA TOWER 135.5
ASTANA APPROACH 124.6
ASTANA RADAR 120.7
ASTANA GROUND 119.6
ASTANA ATIS(EN) 129.5
ASTANA ATIS(RU) 128.3

ASTANA/NURSULTAN NAZARBAYEV
INTERNATIONAL AIRPORT
ILS/DME Z CAT II, III RWY 22



MISSED APPROACH

Climb on track 215° to 2400 or above,
outbound to D6.7 AST, turn RIGHT to AST.
Climb initially to 3800, then as directed by ATC.

RADIO FAILURE:

in case of RCF climb to 6000 to AST and join
to holding pattern. Missed approach turn speed
limited to 240 Kt IAS maximum

ELEV 1158
THR RWY 22

Aircraft Category		A	B	C	D	THR - DME IAK	1.0	2.0	3.0	4.0	5.0	6.0	7.0	8.0
Straight-in Approach OCA/H	CAT I	1360(200)	1360(200)	1360(200)	1360(200)	DME AST	3.7	4.7	5.7	6.7	7.7	8.7	9.7	10.7
	CAT II	1260(100)	1260(100)	1260(100)	1263(103)	ALTITUDE	1531	1852	2175	2499	2826	3154	3484	3800
	CAT III	CAT III approved				HEIGHT	373	694	1017	1341	1668	1996	2326	2642
DME IAK ZERO RANGED TO THR RWY 22														
Aerodrome Operating Minima DH ft x RVR(CMV)	CAT I													
	CAT II													
	CAT III					GS		Kt	80	100	120	140	160	180
						Rate of descent		ft/min	420	530	630	740	840	950

ASTANA
ILS/DME Z CAT II, III

AERONAUTICAL DATA TABULATION

ILS approach to RWY22 from AST VOR/DME	
Fix/point	Coordinates
AST DVOR/DME	51° 00' 05.6"N 071° 26' 00.4"E
IAK D8.0 AST D10.7 (FAP)	51° 07' 40.9"N 071° 37' 52.9"E
THR RWY 22	51° 02' 01.65"N 071° 29' 01.44"E
IAK LOC	51° 00' 18.8"N 071° 26' 21.0"E